

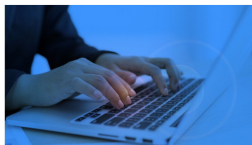
**"Q2 is Technology & Innovation in Motion"**

**Q<sub>2</sub>-Trak**  
*Well Tracking System*

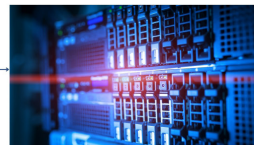
**Rod Lift System Solutions**

**WEB BASED ANALYTICS  
FOR PUMP & WELL  
HISTORY REPORTING**

**Pump/Well Data**



**Q2 Database**



**Q2 Customer Web Browser**





# Welcome to Q2-Trak

Q2-Trak leverages cutting-edge web technology to deliver real-time analysis of pump service data. Our advanced analytical reporting is designed to optimize pump run-life and reduce operational costs, ensuring efficiency and reliability. Our tracking program allows us to identify production levels for each well and monitor when specialized components, such as the Horizontal Valve System (HVS) or Sand Twister, are installed. From the date of installation, we can continuously track and analyze production rates, providing valuable insights into the performance of these specialized solutions.

## FEATURES

Detailed Well History with Runlife Analysis

Pumpsheet Breakdown

Component Analysis

Advanced Sorting, Filtering & Grouping

Customizable Data Columns

Data Exports

## Well Summary Analysis

Pump	API Description	Service	Installed	Pulled	Run Time	Reason For Pull	Foreign Material	Failure Cause	Total	Comments
Well: (100) 005-12-03-00-00 W6										
QGP4861	20-125-RHAC-12-03-00-00	JUNKED	6/1/2014	4/24/2017	1058	Investigation	Scale	Standard Wear	\$254.15	Disassembled Bhp Qgp 4861 and inspected The barrel was worn. The plunger was worn with light scoring. The travelling valve was worn with a fast leak. The standing valve was worn with a fast leak. The top end was pounded, pump was on tap. Light scale was found throughout the BHP, (sample taken) Light pitting and corrosion was found throughout the BHP.
Q23-37	20-125-RHAC-12-03-00-00	INSTALL	4/24/2017		172				\$2,464.79	
Avg: 1058									Avg of Total is \$1,359.47	Sum=\$2,718
Well: (100) 03-12-03-00-00 W6										
NOVGP-19214	20-125-RWAC-12-03-00-00	JUNKED	6/9/2014	6/8/2017	1095	Tubing Failure	Scale	Corrosion	\$254.15	Disassembled and inspected BHP CEGP-4511. The barrel and plunger were both worn from excessive friction. The hold down had thread damage. The traveling valve was worn with a fast leak. The standing valve was seized inside the standing cage. There was severe corrosion found throughout the BHP. A sample of scale was collected from the plunger. Junked BHP and put remaining parts into customer stock.
Q23-55	20-125-RHAC-12-03-00-00	INSTALL	6/8/2017		127				\$2,372.79	
Avg: 1095									Avg of Total is \$1,313.47	Sum=\$2,626
Well: (100) 03-14-04-00-00 W4										
WDH-004	25-150-RWAC-14-04-00-00	JUNKED	5/12/2015	5/12/2017	731	Hang Up	Scale	Foreign Material	\$246.75	Repair BHP #WDH-004, Job #QDH-149, 25-150-RWAC-14-4-0-0 w/top gas check, steel chrome barrel, spray metal plunger, CS insert guided travel cage, CS insert guided standing cage, titanium carbide balls & seats, CS/Teflon coated strainer nipple and bushing. BHP pulled as not pumping, seized by scale when brought to surface, spiral guide, valve rod guide, standing cage, strainer nipple, heavily coated with scale. BHP tanned nuts.

The Well Summary page provides a centralized interface for all data analysis and can be heavily customized to the user's needs. Data can be grouped, filtered or searched by any column and columns can be resized, re-ordered or interchanged with other service information if required.


All data is available for download in Excel format through the export feature.

Selecting a row in the data grid will load the full Pumpsheet information in a new browser window.

# Pump Sheet Breakdown

The Pump Sheet contains a comprehensive breakdown of the pump repair and includes all failure information such as:

- Customer Information including Well, PO, AFE and Authorizer.
- Pump information including API description, fish neck and stroke size.
- Pull information including reason for pull, pump failure cause, corrosion and any foreign material identified.
- Detailed component analysis and individual failures including metallurgy and replacement components.
- Pump technician notes.
- Component failure images.



**PUMPSHEET**  
**115761**

**PUMP SERVICE DETAILS**

Customer:

Ship To:

Customer Order No:

Pump Number:

Pre-Service Pump Desc:

Authorized By:

Field:

From/Chrg Well:

Install Date:

Pull Date:

Pump Runlife Date:

PS Type:

REPAIR

Pumpsheet Date:

2/21/2024

Failure Date:

2/21/2024

AFE:

PO No:

Served By:

Teren S.

Shipped From:

08(BROOKS) - BAY 1, 460 AQUADUCT DRIVE, BROOKS, AB

Invoice Comments: Repaired and returned to location

**WEAR (Thousands/Inch at Feet from Top)**

Barrel - Feet

Pre-Service:

Post Service:

Plunger - Feet

Pre-Service:

Post Service:

**PARTS**

Prod Cat	Orig Item No	Mtrl	Cond	Runlife	Item No	Item Description	Mtrl	Qty	Price	Total
COUPLINGS	CR66FTAS	N/A	OK	867						
Accessory- Pump	99W2C-25	CS	OK	867						
COUPLINGS	CR66FTAS	N/A	OK	867						
FITTINGS-FS/SS	S23N	SS	OK	867						
SM VALVE ROD	114KQ-168	VRM	OK	867						
FITTINGS-FS/SS	S47K	SS	OK	1580						
PLGR-SPR METAL	102KQ3-3	PSM	OK	1298						
CAGES - ONE PC	S39K-IG-1PC	SS/IG	OK	1580						
VALVE - T/C	12KCTC	VTC	OK	867						
Accessory- Pump	TRULIFT200-DPSS	SS	CONV	867	GBV-200	GAS BAILER VALVE 2"	CS	1		
FITTINGS-FS/SS	S70N-IG2	SS	OK	867						
FITTINGS-FS/SS	S70N-IG1	SS	OK	867						
Accessory- Pump	116N3-SP	BR	WRN	867	116N3-SP	TOP CHECK PLUNGER MODIFIED 2-1/2" FOR 7/8" V.R. - BRASS	BR	1		
FITTINGS-FS/SS	S85N	SS	OK	867						
FITTINGS-BRASS	B110N	BR	OK	1580						
625-626-SEATCUP	625M+70P	NY	WRN	803	625M+70P	SEATING CUP TYPE HR 2-1/4" + 70 PLASTIC	NY	3		
FITTINGS-BRASS	B95N	BR	OK	1580						
FITTINGS-FS/SS	S25NK	SS	OK	1298						
BBL-BRASS CHRIM	B15K14C	BBC	WRN	1298	B15K14C	BARREL RW 2 1/4"OD X 2"ID 14" BRASS CHROME	BBC	1		
CAGES - ONE PC	S37M-IG-1PC	SS/IG	OK	1580						
VALVE - T/C	12MCTC	VTC	OK	867						
FITTINGS-BRASS	B22N	BR	OK	1580						
Accessory- Pump	93D24-FF125	N/A	OK	1579						
CAGE_INSERT GD	70K-IG3	TC	OK	1580						
					LAB-D	DATA COLLECTION		1		
					LAB-E	ENVIRONMENTAL + SHOP SUPPLIES		1		
					LAB-Q	Q2 ALS SERVICE CHARGE		1		
SubTotal:										0.00
Freight Charges:										0.00
Tariff Charges:										0.00
GST(5.0000%):										0.00
Grand Total										0.00

Reason For Pull:

Secondary Reason:

Pump Failure Cause:

Secondary Pump Failure Cause:

Foreign Material:

Post Service API Desc:

Accessories Codes:

Post Service Maximum Stroke:

To WellSite:

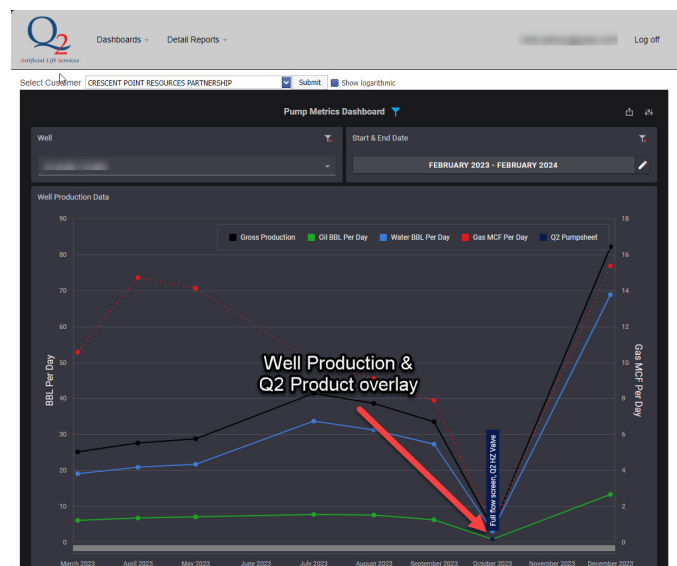
Install Date:

25-200-RWAC-14-03-00-00

103.0000

2/23/2024

PumpSheet Notes: Pump was pulled the pump was in good condition the barrel was wearing on the ID the seat cups were worn the top check plunger was worn. The plunger cages and the valves were in good condition the Tru lift was changed to a Gas Bailer valve the put was repaired and returned to location.





*Artificial Lift Services*



**[www.q2als.com](http://www.q2als.com)**

**We are a fully integrated company with over 40+ repair and service locations strategically located across Western Canada and the United States.**



**Corporate Head Office  
& Manufacturing Facility**

**7883 Edgar Industrial Way  
Red Deer, AB T4P 3R2  
Phone: 403.343.8802  
Email: [sales@q2als.com](mailto:sales@q2als.com)**



**Head Office**

**3427 E. Hwy 158  
Midland, TX 79706  
Phone: 432.685.2600  
Email: [sales@q2als.com](mailto:sales@q2als.com)**